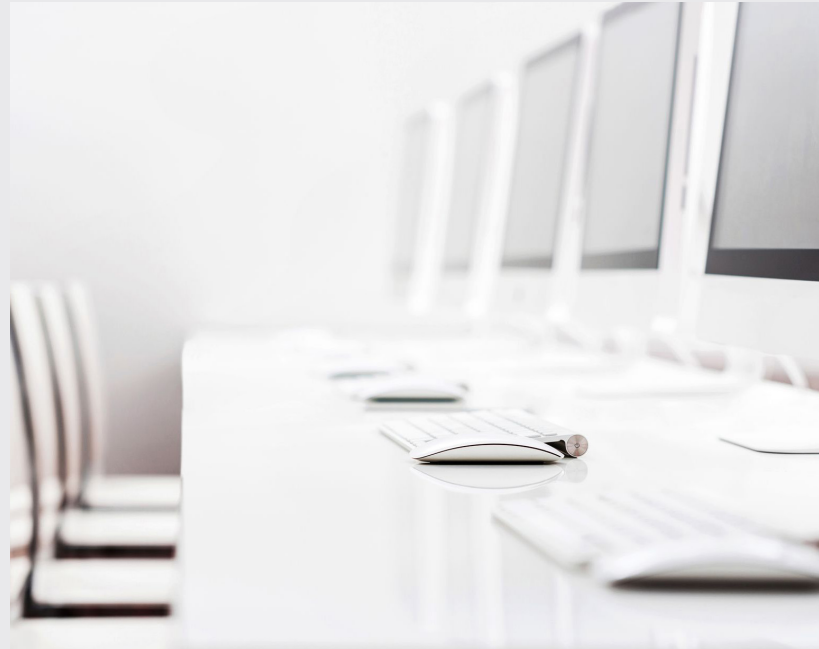


Functional Testing Services



Your product needs to be reliable and predictable in all markets. You can't afford the alternative—if people struggle to use it, your brand will suffer and users will jump to a competitor.

RWS Moravia provides assurance that your websites, apps and products work as they should in any language with our Functional Testing Services. Our engineers verify that the product functions as expected, regardless of whether it has been localized. This is often completed in the early stages of the product globalization lifecycle on the source-language version.

We customize our testing solutions to the security requirements and preferences of our clients, using in-country linguists, our two secure testing labs in the Czech Republic and China or a mix of the two.

Our testing labs contain a wide variety of equipment to handle any type of website, device, hardware, software or mobile app testing project. We support all the major platforms and operating systems and can establish testing environments on physical hardware, through emulators or virtual machines or via screenshots sent to remote linguists.

Our team of highly experienced test developers, engineers and coordinators can manage testing engagements from start to finish, as well as develop test cases on behalf of or in coordination with our clients. We also specialize in creating scripts to automate time-consuming tasks such as executing testing scenarios or taking screenshots, which can save time and money as well as free up resources for more complex tasks.

Our functional testing services include:

- › **Pairwise testing:** tests all possible discrete combinations for a pair of input parameters
- › **Acceptance testing:** considers user needs, product requirements and business processes to determine whether a product meets the acceptance criteria
- › **Use-case testing:** assesses the product in a real-world environment from the user's perspective
- › **Stress testing:** evaluates how a product behaves at or beyond the limits of its anticipated workloads
- › **Load testing:** assesses the product's functionality under certain "pressure" conditions (such as a high number of active users)
- › **Compatibility and interoperability testing:** verifying that the product will function as expected in a wide variety of configurations and conditions
- › **Regression testing:** tests a new release (or "drop" of the product, looking for previously fixed issues and bugs

Functional testing looks for things like:

- › Major functional errors like crashes, hangs and system errors
- › Specific functionality not working or not behaving according to specs
- › Input/output errors
- › Interoperability defects between the product and systems such as the OS or web browser
- › Internationalization/globalization errors that can cause localization issues in the future
- › Functionality that does not work the same across all platforms, environments or languages
- › Links that are not working
- › Images not showing or content not loading properly
- › Access rights issues
- › Any other defects related to functionality, usability or the product's ergonomics

If you want your product to work like it should in all markets, we're RWS Moravia. We help the world's most visible brands release high-quality, user-friendly, bug-free products and content.

